

**The Island, Bridewell street entrance**  
Nelson St, Bristol  
BS1 2QD

**0117 3763457**

**info@theisland.uk**

### **Introduction**

- The Island is a multi use arts venue housing artists studios, a dance space, circus training space, the Island team's admin office, a gallery space and a venue in the basement which hosts club nights and workshops.
- Please note, we do not have an accessible toilet on site and all areas are accessed via steps. We are housed in the old Bridewell police station, a grade II listed building. Access is limited.

### **Comments**

- We have no accessible toilets on site, though all toilets are inclusive to all gender identities.

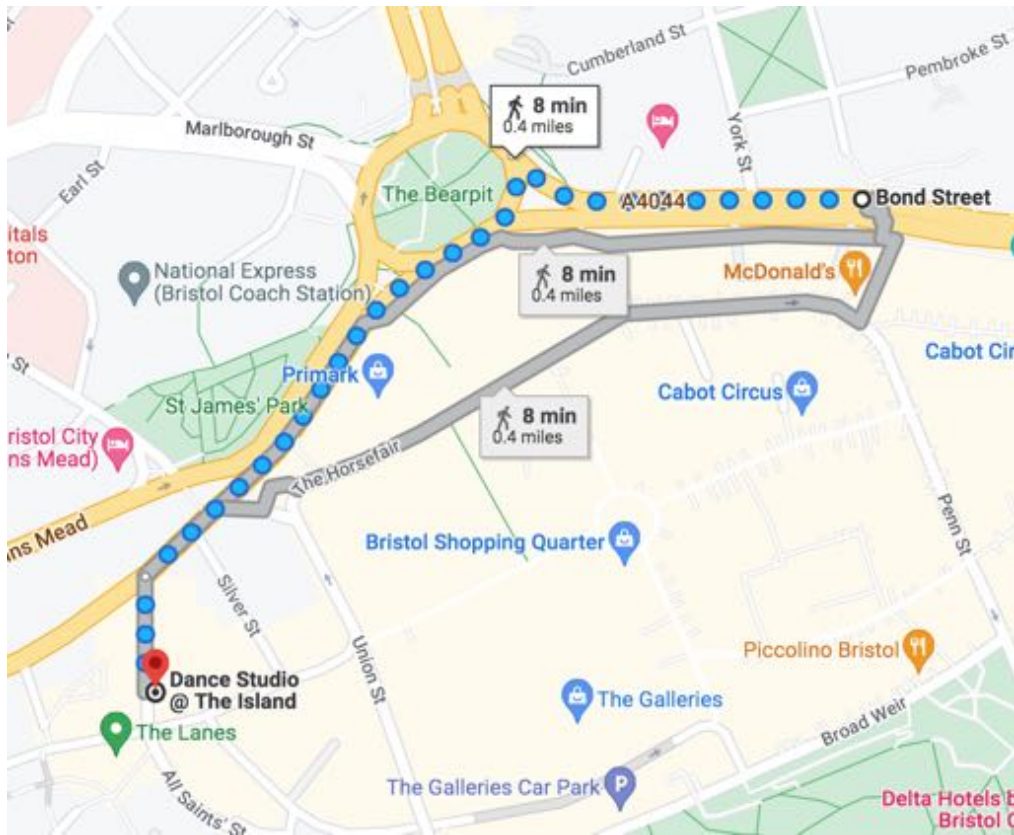
### **Opening times**

- The Island office is usually staffed 10am - 5pm Monday to Friday, if you want to come and discuss using the space it is useful to contact us first on [info@theisland.uk](mailto:info@theisland.uk) or give us a call on **0117 3763457** .

### **Location bus/rail**

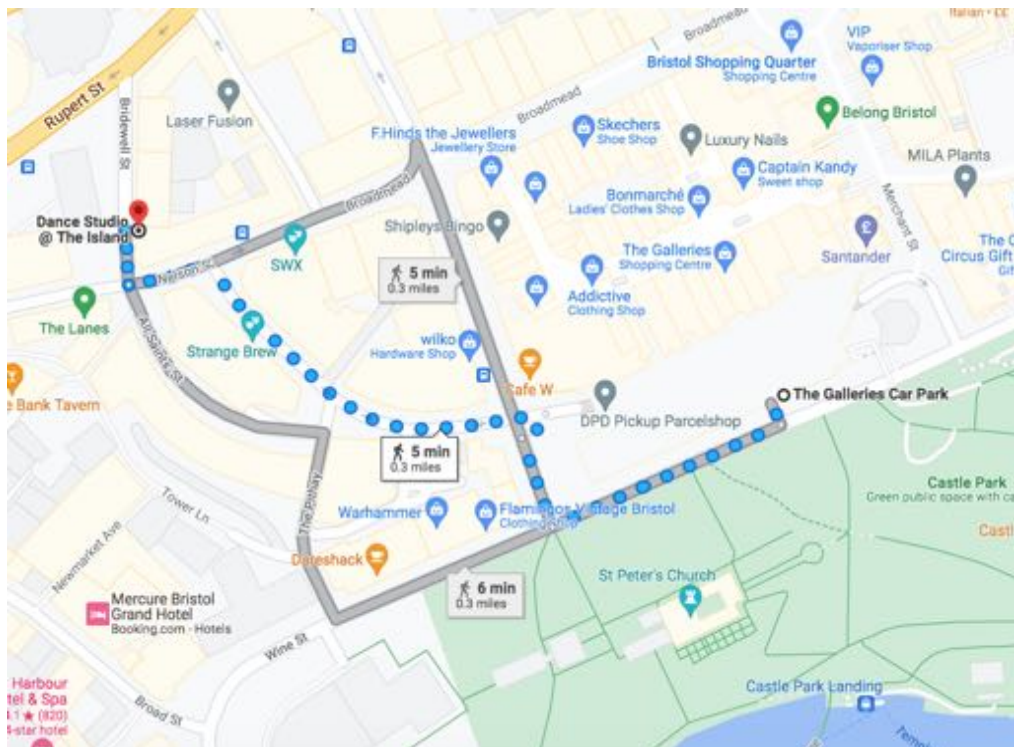
- The nearest train station is Bristol Temple Meads.
- Buses from Temple Meads, you can get the number 8 bus from just outside the station. The bus generally runs every 20-30 minutes, though at busier times there is a bus every 10 minutes. Take the bus 1 stop (around 7 minutes) to Bond Street (check with the driver that Bond street is their next stop as the bus does a loop around the city) and when you get to Bond Street you are an 8 minute walk from The Island.

- See below for maps from Bond Street to The Island, Bridewell Street.



## Parking

- The cheapest place to park nearby is at The Galleries, see the maps below to get to The Island from The Galleries car park.



- **Information, parking at The Galleries**

1 Newgate  
Broadmead  
Bristol, UK  
BS1 3HA

0117 929 0569

\*Information correct 26/01/2023, please check the website before planning your visit  
<https://www.parkme.com/en-gb/lot/102666/the-galleries-bristol-uk>

### **Hours of Operation**

**Mon - Sat** 6:30am - 10pm

**Sun** 6:30am - 5pm

### **Prices**

1 Hour £2

2 Hours £3.20

Each Additional Hour £1





7 Hours £8.20

24 Hours £18

Mon-Sun  
In after 4pm £2

Bills / Coins / Mastercard / Visa

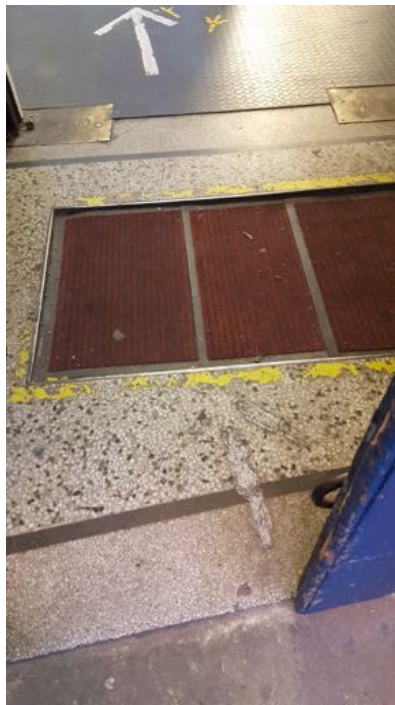
## Directions to The Island Gallery Space from Bridewell Street

	<ul style="list-style-type: none"><li>• Access to the dance space is via Bridewell street, the door is set back down a short alleyway which is approximately 14m from Nelson Street and almost opposite Rough Trade records.</li></ul>
	<ul style="list-style-type: none"><li>• The alleyway is accessed via 2 old uneven steps measuring roughly 9cm &amp; 15cm high with a depth of 38cm.</li></ul>
	<ul style="list-style-type: none"><li>• The left hand side of the door opens inwards, it is 65cm wide, the door is heavy and swings shut.</li><li>• The right hand blue door can also be opened from the inside, it is 65cm wide and heavy.</li></ul>
	<ul style="list-style-type: none"><li>• If you are attending a dance lesson push the dance space buzzer so your teacher can buzz you into the building (this is the white yellow &amp; blue button on the silver panel in the picture).</li><li>• If you are renting the space you should have been sent codes and the code lock is on the blue door 60cm from the left and 145cm from the ground.</li></ul>





- To access the door there is a step up which is uneven and worn, it is approximately 6cm high.



- Just inside the door on the stone floor is a rectangular indent below floor level for the mat. There is a small lip and the mats lie around 2cm beneath floor level, the matted area is approximately 50cm from the door, the mat is 60cm wide and is not parallel with the door. The matted surface is uneven.



- 47cm from the mat is a level change to rubber flooring, the rubber flooring sits less than 1cm above the level of the stone floor.



- As you enter the building, directly ahead of you there is a corridor to the left and a flight of steps downwards to the right.
- To get to the gallery take the corridor to the left.

- Go straight ahead and take the stairs up to the next floor, the stairs are approximately 8m from the entrance and round a corner.



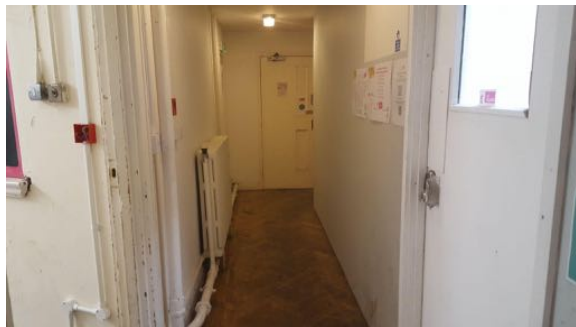
- There are 2 flights of stairs
- The first has 20 steps which have a height ranging between 16 and 18 cm.
- The depth of the stairs ranges between 28 and 29cm.



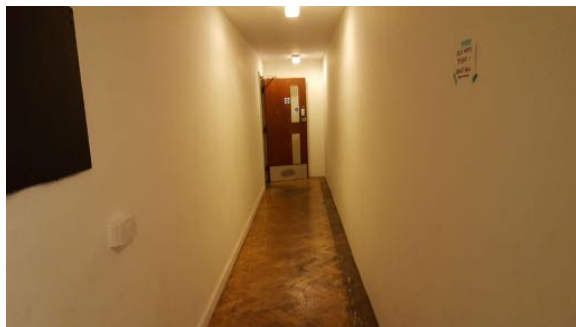
- The second flight of stairs has 6 steps, the first step is 15cm high, the rest are between 17 & 18cm high.
- The depth of the stairs ranges between 28 and 29cm.



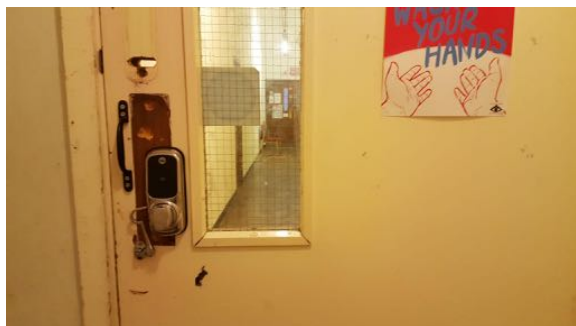
- At the end of the stairwell there is a slight lip down onto the parquet floor, this is less than 1cm.



- Turn left, right and then left to get to the dance studio. The first corridor is approx 4.5m long and looks like the picture to the left.

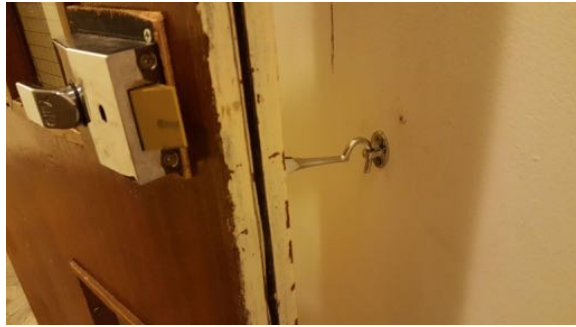


- Then, turn right down the next corridor and walk to the end, this is approximately 8.5m.
- On the left hand side at the end of the corridor is a door, if you are attending a lesson this door will be open, turn left and the dance studio is at the end of the corridor.



- If you are teaching a lesson or have a private rehearsal the door may be shut. You will need to use the codes provided to you. The door is heavy and opens inwards.





- There is a hook behind the door to pin it open while you are using the space.



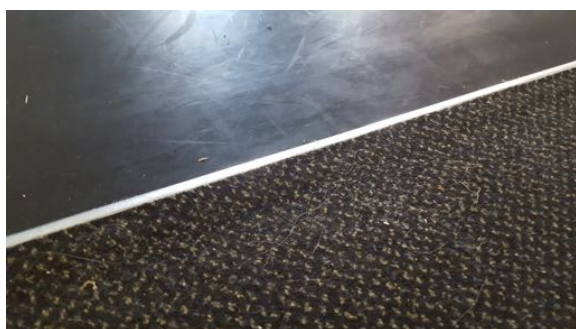
- Follow the corridor left approx. 13.3m and you will find yourself at the dance space door.



- If you are in a lesson the door will be open, if not the code lock is 140cm high.



- Immediately beyond the door are 2 level changes, the first lip is approximately 1cm above the parquet floor level.
- The second lip is approximately 5cm higher.



- There is also a small height change between the carpeted area and the dance surface. The dance floor lies below the carpet level, the height change is less than 1.5cm.





- Island dance space.



- Island dance space.