

The Island
Nelson St, Bristol
BS1 2BE

0117 3763457

info@theisland.uk

Introduction

- The Island is a multi use arts venue housing artists studios, dance space, circus training space, the Island team's admin office, a gallery space and the venue in the basement which hosts club nights and workshops.
- Please note, we do not have an accessible toilet on sight and all areas are accessed via steps. We are housed in the old Bridewell police station, a grade II listed building. Access is limited.

Comments

- We have no accessible toilets on site, though all toilets are inclusive to all gender identities.

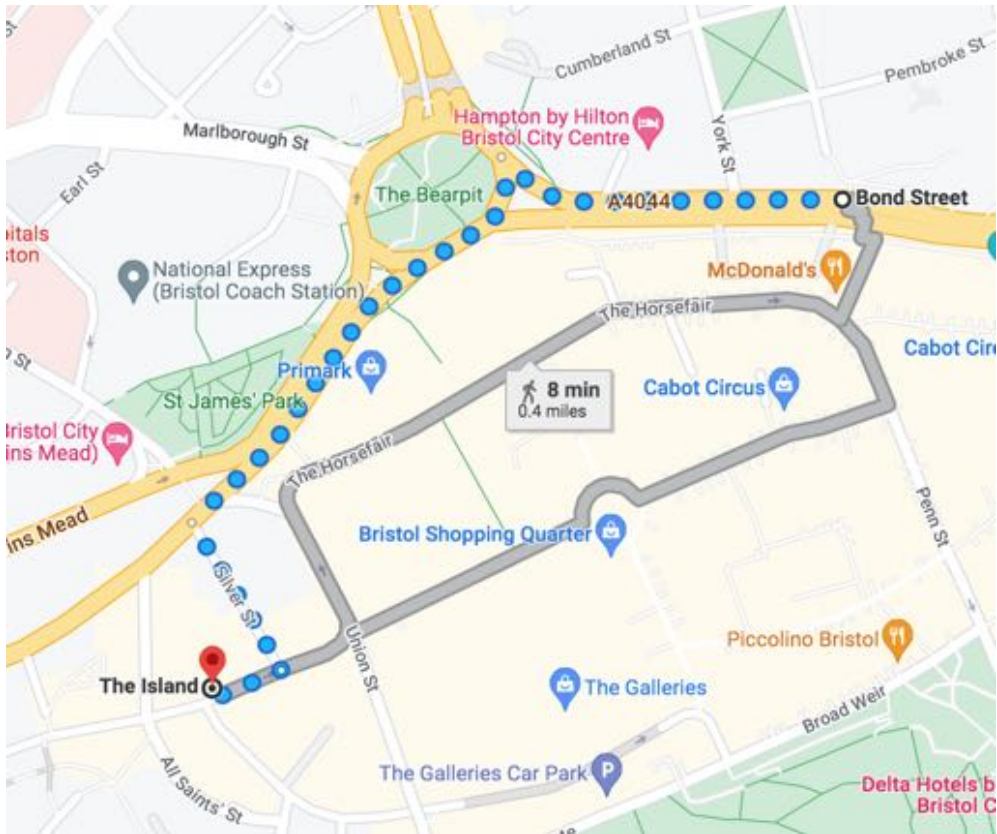
Opening times

- The Island office is usually staffed 10am - 5pm Monday to Friday, if you want to come and discuss using the space it is useful to contact us first on info@theisland.uk or give us a call on **0117 3763457** .

Location bus/rail

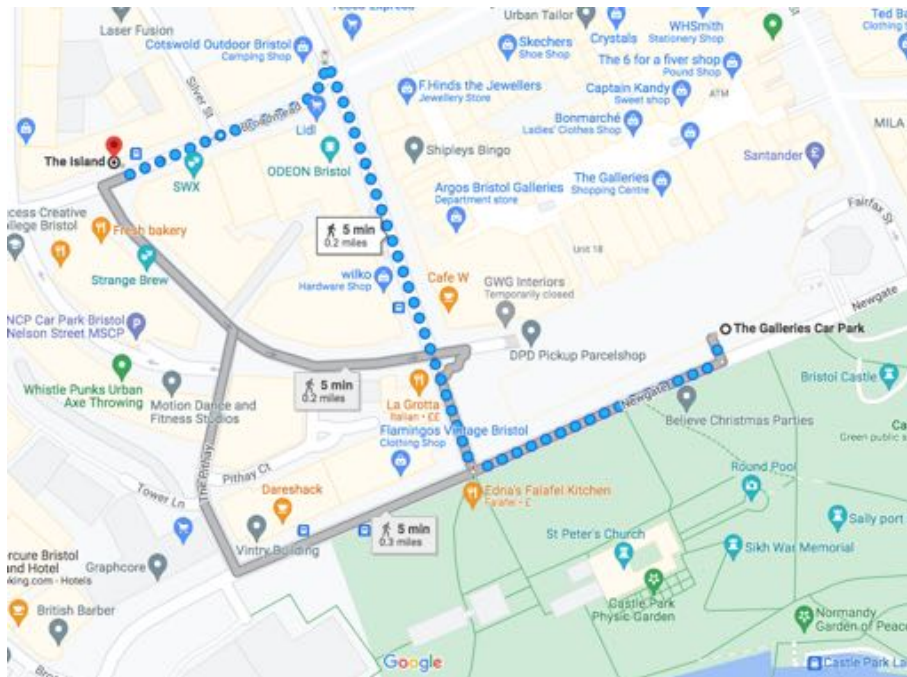
- The nearest train station is Bristol Temple Meads.
- Buses from Temple Meads, you can get the number 8 bus from just outside the station. The bus generally runs every 20-30 minutes, though at busier times there is a bus every 10 minutes. Take the bus 1 stop (around 7 minutes) to Bond Street (check with the driver that Bond street is their next stop as the bus does a loop around the city) and when you get to Bond Street you are an 8 minute walk from The Island.

- See below for the route from Bond Street to The Island, Nelson Street entrance.



Parking

- The cheapest place to park nearby is at The Galleries, see the maps below to get to The Island, Nelson Street from The Galleries car park.



- **Information, parking at The Galleries**

1 Newgate
Broadmead
Bristol, UK
BS1 3HA

0117 929 0569

*Information correct 26/01/2023, please check the website before planning your visit
<https://www.parkme.com/en-gb/lot/102666/the-galleries-bristol-uk>

Hours of Operation

Mon - Sat 6:30am -10pm

Sun 6:30am - 5pm

Prices

1 Hour £2

2 Hours £3.20

Each Additional Hour £1

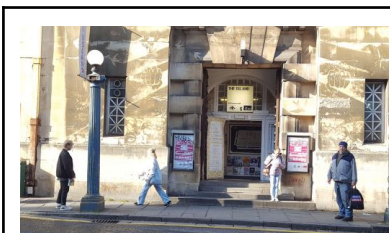
7 Hours £8.20

24 Hours £18

Mon-Sun
In after 4pm £2

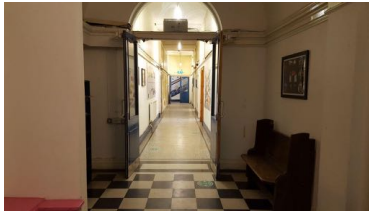
Bills / Coins / Mastercard / Visa

Directions to the Circus Training Space from Nelson Street



- The entrance to the circus space is on Nelson Street next to the bus stops and opposite Fairfax street.

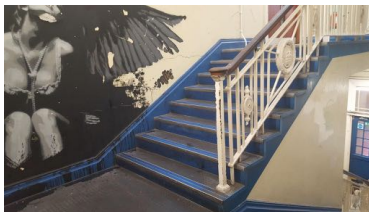
	<ul style="list-style-type: none"> • The pavement is uneven.
	<ul style="list-style-type: none"> • There are 4 steps, the first step is 20cm high, the rest of the steps are 13cm high.
	<ul style="list-style-type: none"> • There is a mat 65cm beyond the steps, there are 2 small lips both less than 2 cm. The mat is worn and the surface is uneven. The mat is below floor level.
	<ul style="list-style-type: none"> • There is a carpeted area 41cm from the mat with another small lip which is less than 0.5cm. The carpet is higher than the stone floor.
	<ul style="list-style-type: none"> • Nelson Street entrance to The Island.
	<ul style="list-style-type: none"> • The buzzer is on the left hand side of the door 140cm from the ground. The door opens inwards and swings shut.
	<ul style="list-style-type: none"> • There is also a code lock for tenants on the right hand side of the door at a height of 135cm. The door opens inwards and swings shut.



- Turn right down the corridor and walk to the end where you will find the circus stairs. The stairs to the circus space are approximately 22m from the Nelson Street entrance.



- There are 2 flights of stairs to get to the circus training space.
- The first flight of stairs has 20 steps, they are around 16cm high and with a depth of approximately 30cm.



- The second flight of stairs has 8 steps. The first step is 14cm high, the rest are around 16cm high with a depth of around 30cm.



- The circus space is the first door on the left, the code lock is 154cm high. The door opens inwards.
- There are 2 standard sized inclusive cubicles through the door to the right of the circus space.



- After entering the circus space entrance you will find yourself in another room with 2 doors on the far wall. The circus space is through the double doors on the left.



- Our circus space.



- The door to the right of the circus space is a set of inclusive toilets, note: All cubicles are standard sized, they are not accessible toilets.



- The toilet has 3 cubicles which are approximately 80cm wide.



- Sink area in inclusive toilets.